

THE
CONTINUUM

双悦园

HOIHUP
— REALTY —
海峽實業私人有限公司

SUNWAY®

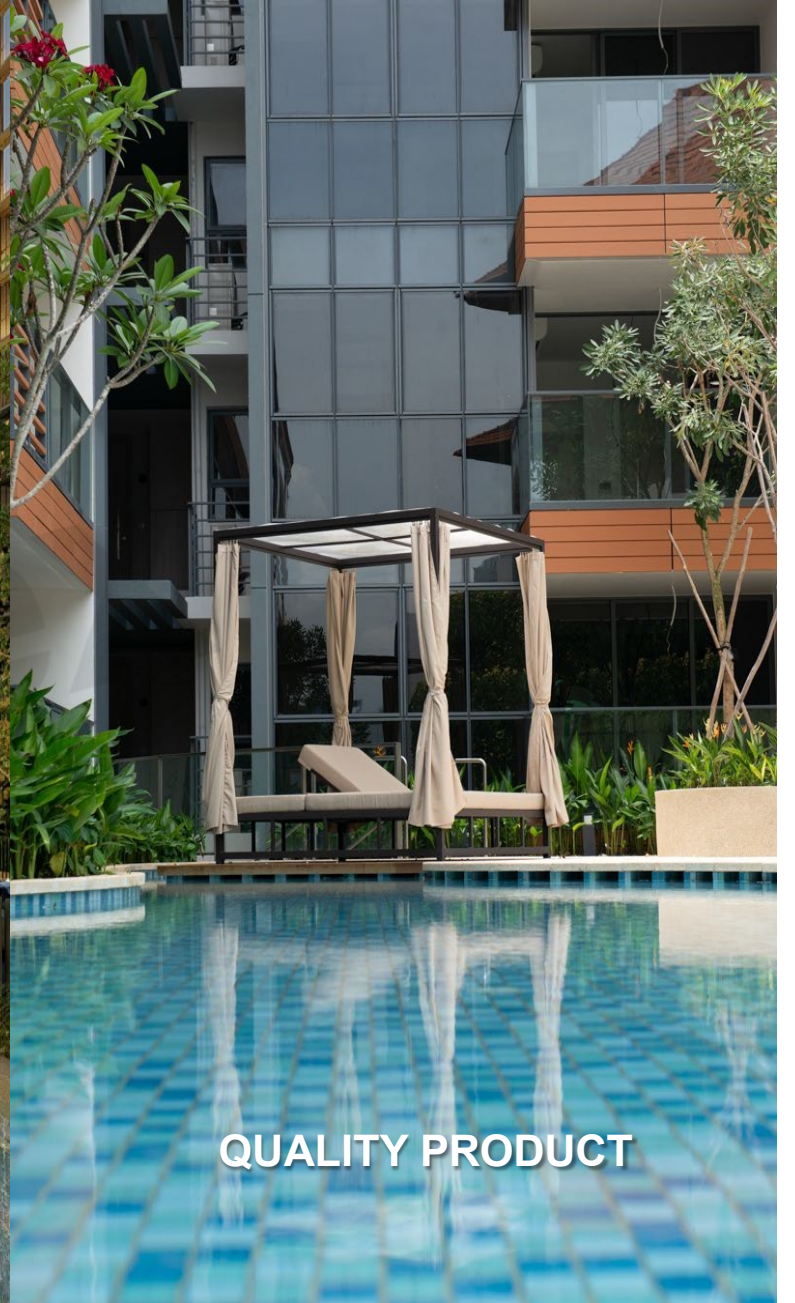
An award winning combination, inspired and completed a diversified portfolio of property developments ranging from landed housing to condominiums and mixed-use commercial developments.



**FUNCTIONAL YET
INNOVATIVE DESIGN**



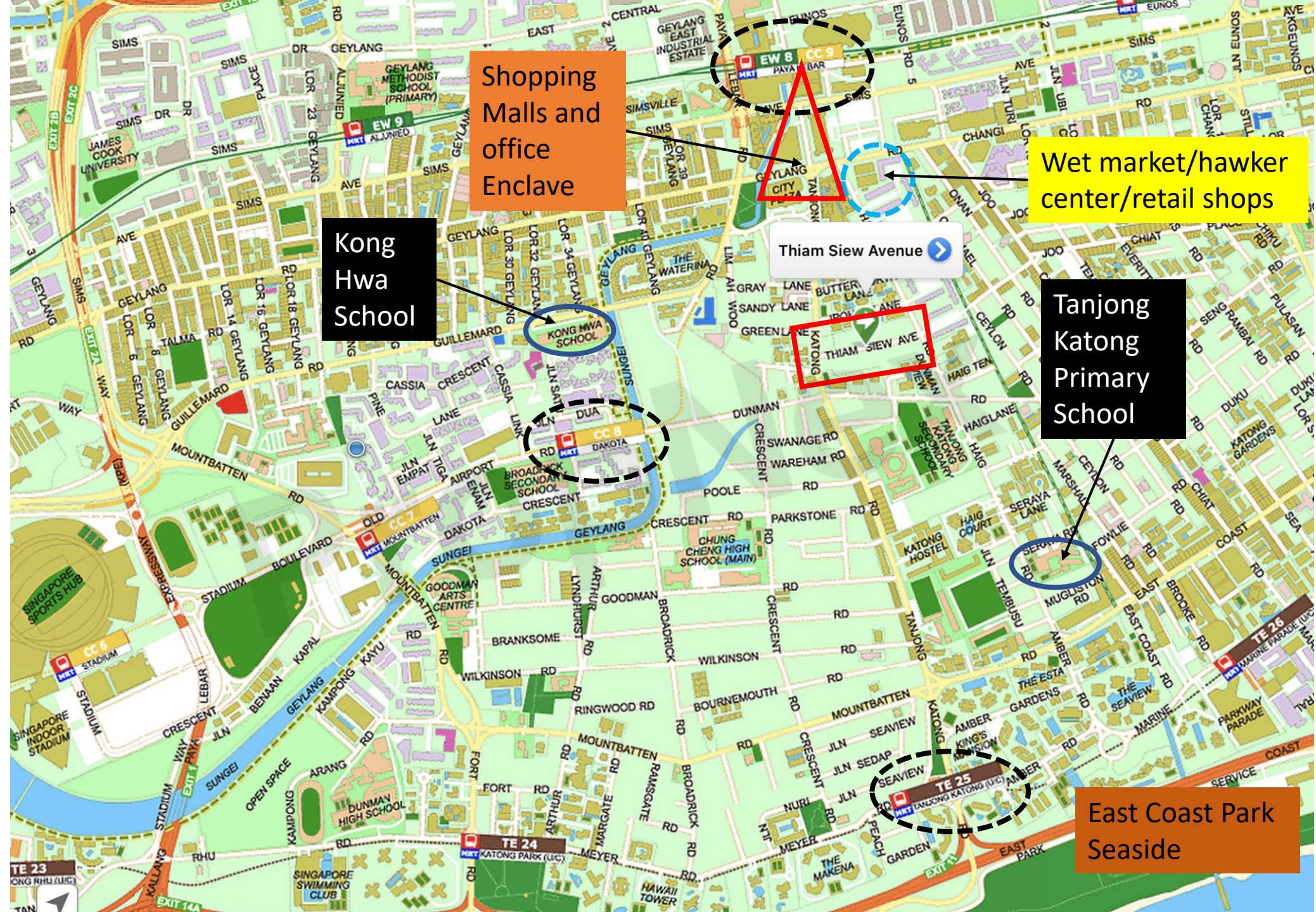
ENHANCING VALUE



QUALITY PRODUCT

| | |
|--|---|
| Overall Site area (North + South) | |
| Site Area | 25,083.2 m2 (269,995 sqft) |
| Plot Ratio | 2.8 |
| Overall GFA (North + South) | 77,256.26m2 (inclusive of Bonus Balcony GFA, IRS, Built Environment Transformation GFA and existing conservation Bungalow) |
| Tenure | Freehold |
| Development mix | 4 tower blocks, 17 storey height with roof garden (9 per core) and 2 tower blocks, 18 storey height (6 per core) with 8 stacks of private lift 1 conservation bungalow at North site 1 overhead bridge linking North site and south site |
| Number of units | 816 units |
| Carpark | 816 + 8 accessible lots (inclusive of 8 active EV Lots) |
| Number of carparks lots/ ratio | 2 Full Basement Carpark 1 lot to 1 unit |
| Refuse disposal | Pneumatic Waste conveyance system to North and South |
| Feature | Green Mark Platinum + Super Low Energy (SLE) |

CONVENIENCE



Shopping Malls and office Enclave

Wet market/hawker center/retail shops

Kong Hwa School

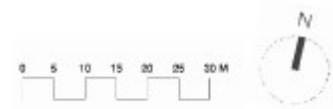
Tanjong Katong Primary School

East Coast Park Seaside

Haig's Girl School

LOCATION

LANDSCAPE OVERALL PLAN – GROUND FLOOR



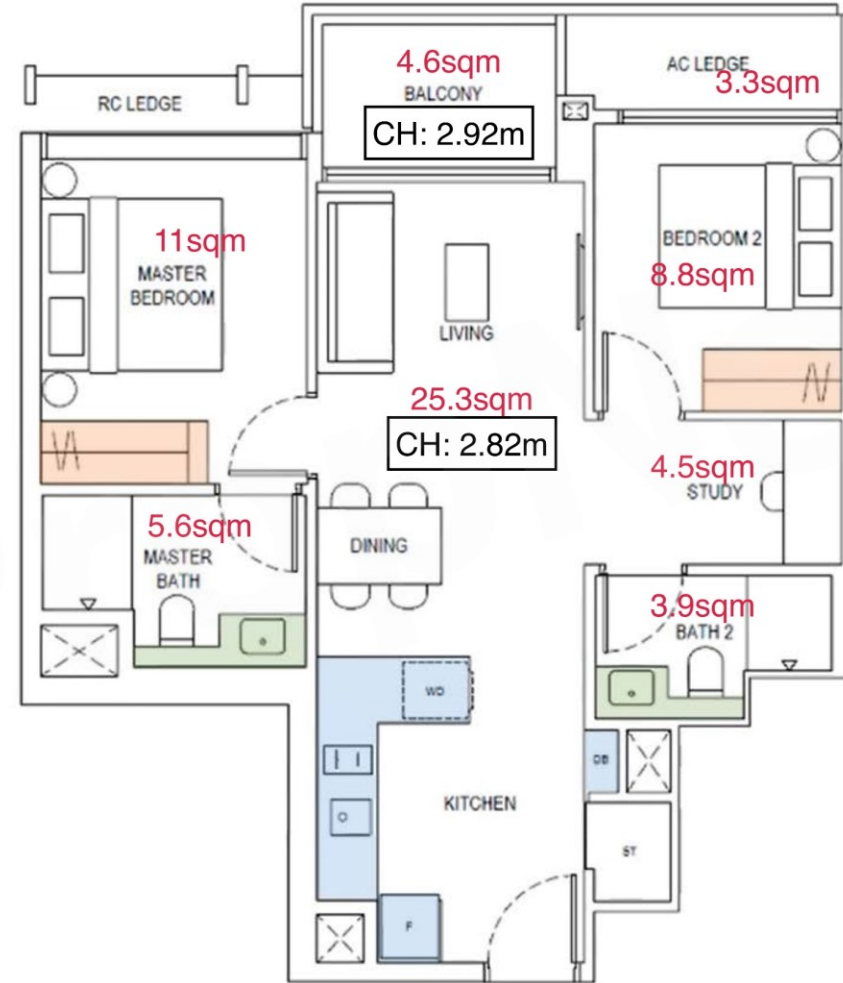
INFORMATION SUBJECT TO CHANGE WITHOUT PRIOR NOTICE . NOT FOR CIRCULATION . DATED MARCH 2023



THE
CONTINUUM

THE SIGNATURE

SHOWUNIT 2BR+Study 721sf

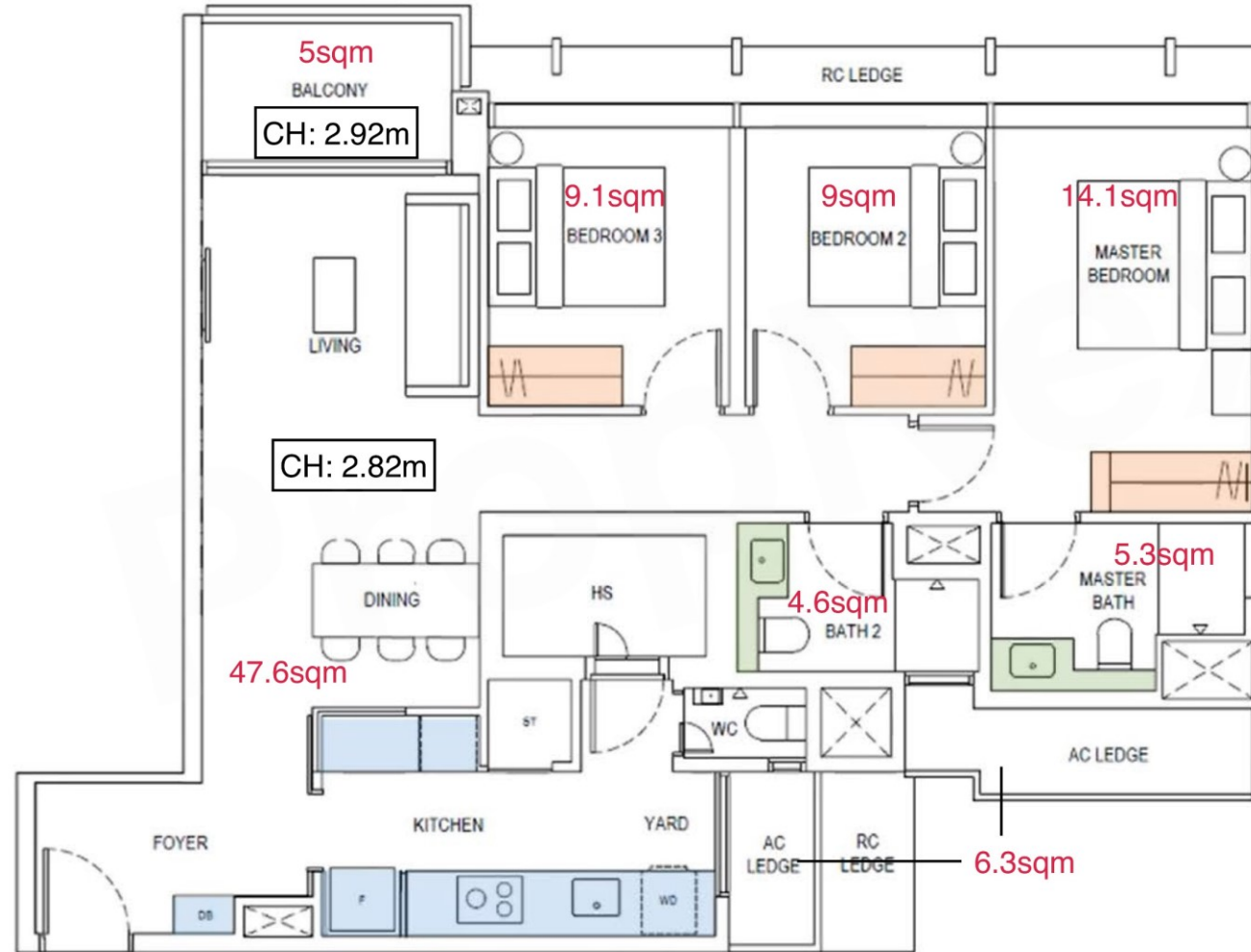


BROCHURE PLAN



THE SIGNATURE

SHOWUNIT 3BR 1087sf



BROCHURE PLAN



THE
CONTINUUM

THE PRESTIGE

SHOWUNIT 3BR+Study 1249sf

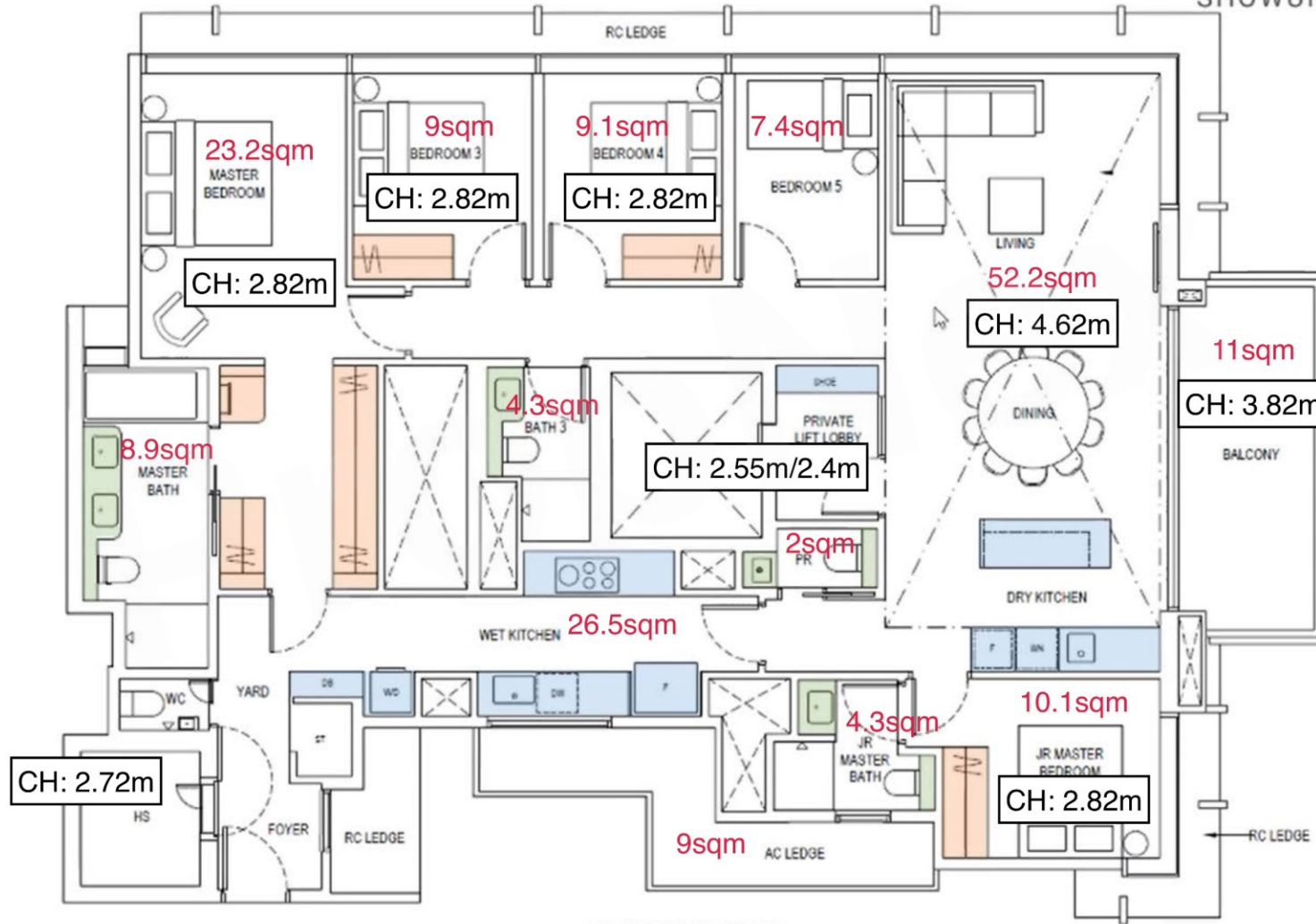


BROCHURE PLAN



THE PRESTIGE

SHOWUNIT 5BR-PH 2260sf



BROCHURE PLAN

LANDSCAPE OVERALL PLAN – ZONING



INFORMATION SUBJECT TO CHANGE WITHOUT PRIOR NOTICE . NOT FOR CIRCULATION . DATED MARCH 2023



LANDSCAPE OVERALL PLAN - FACILITIES

A ARRIVAL ZONE NORTH

- A1 Waterwall Drop-off Plaza
- A2 Waterwall
- A3 Bicycle Parking

B PLAY ZONE NORTH

- B1 Playground North
- B2 Playground Deck

C WELLNESS ZONE

- C1 Lap Pool (33.3m lap length x 7m lap width, 1.2m water depth) (approx. 270m² incl. Jacuzzi Cove)
- C2 Jacuzzi Cove
- C3 Pool Deck

D HERITAGE ZONE

- D4 BBQ Pavilion
- D5 Resting Pavilion
- D6 Changing Room
- D7 Accessible Toilet
- D8 Outdoor Shower
- D9 Thiam Siew House
- D10 Library
- D11 Club Room
- D12 Foyer
- D13 Thiam Siew House Front Court

E FITNESS ZONE

- E1 Front Court Lawn
- E2 Water Bowl
- E3 Roof Tiles Feature Wall
- E4 BBQ Pavilion
- E5 Accessible Toilet
- E6 Multipurpose Lawn
- E7 Leisure Pool Deck
- E8 Leisure Pool (approx. 244m² incl. Aqua Gym Pool & Jacuzzi Cove)
- E9 Aqua Gym Pool

F GARDEN ZONE NORTH

- F1 Jacuzzi Cove
- F2 Aqua Gym Pool Deck
- F3 Outdoor Shower
- F4 Outdoor Gym
- F5 Yoga Lawn
- F6 Lobby Garden
- F7 Patterned Garden
- F8 Reflexology Garden

G CONTINUUM BRIDGE

- G1 Resting Pod
- G2 Bridge



M GARDEN ZONE SOUTH

- M1 Sensory Garden
- M2 Lawn Garden
- M3 Reflexology Garden

L PLAY ZONE SOUTH

- L1 Playground South
- L2 Water Play
- L3 Outdoor Shower
- L4 Lawn Steps
- L5 BBQ Pavilion
- L6 Multipurpose Recreational Court

K "LAKE" POOL ZONE

- K1 50m Lap Pool (50m lap length x 5.5m lap width with approx. 276m² area, 25m lap length x 3.0m lap width with approx. 95m² area)
- K2 Clubhouse Deck
- K3 Outdoor Shower
- K4 South Side Social
- K5 Glass House (1st Storey)
- K6 Sound Room (1st Storey)
- K7 Social room (2nd Storey)

J "RIVER" POOL ZONE

- J1 Resting Pavilion
- J2 Cascading Children's & Toddler's Pool (0.5m & 0.3m water depth) (approx. 98m²)
- J3 Children's Pool Deck
- J4 Outdoor Shower
- J5 Lawn Deck
- J6 Family Pool (0.9m water depth) (approx. 149m² incl. Wellness Pool)
- J7 Wellness Pool (0.9m water depth)
- J8 Lounge Deck
- J9 Swan Neck Cove
- J10 Hydrotherapy Pocket
- J11 Vichy Shower Beds

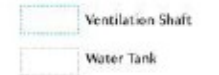
N ARRIVAL ZONE SOUTH

- N1 Resting Pavilion
- N2 Droplet Drop-off Plaza
- N3 Droplet Pool
- N4 Bicycle Parking
- N5 Changing Room
- N6 Accessible Toilet

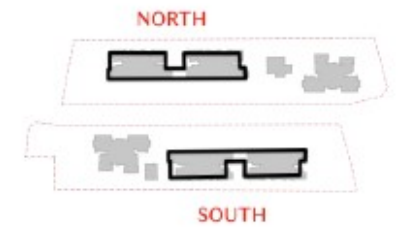


OTHER FACILITIES

- O1 Guardhouse
- O2 Pedestrian Gate
- O3 Management Office
- O4 Generator Set
- O5 Bin Centre (Basement)
- O6 Electrical Substation (Basement)
- O7 MDF Room (Basement)
- O8 Consumer Switch Room (Basement)
- O9 Streetside Seating Pods



LANDSCAPE OVERALL PLAN – ROOFTERRACE



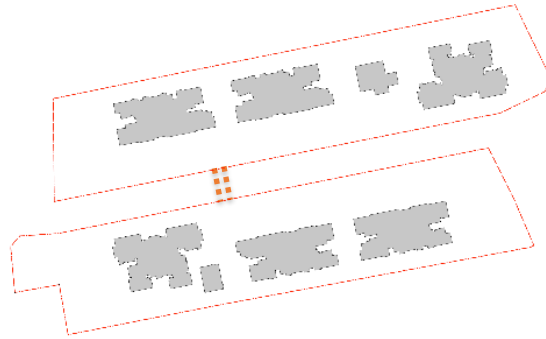
- P SKY GARDEN NORTH**
- P1 Sky Jacuzzi
- P2 Outdoor Lounge
- P3 Grill Deck
- P3.1 Resting Lounge
- P4 Community Garden
- P5 Bridge Deck
- P6 Hot Tub
- P7 Yoga Lawn
- P8 Outdoor Fitness Deck
- P9 Feeding Deck
- P10 Sky Bar
- P11 Sky Fitness
- P12 Accessible Toilet
- P13 Outdoor Shower



- Q SKY GARDEN SOUTH**
- Q1 Grill Deck
- Q1.1 Resting Lounge
- Q2 Dining Deck
- Q3 Hammock Deck
- Q4 Swing Deck
- Q5 Bridge Deck
- Q6 Sky Jacuzzi
- Q7 Hot Tub
- Q8 Yoga Lawn
- Q9 Fitness Deck
- Q10 Garden Deck
- Q11 Sky Club
- Q12 Sky Gym
- Q13 Accessible Toilet
- Q14 Outdoor Shower



OVERHEAD BRIDGE



A LANDMARK PRIVATE
OVERHEAD BRIDGE
CONNECTING NORTH
AND SOUTH SITE

IT CONNECTS 2ND STOREY
CLUB HOUSE AT SOUTH
TO FACILITY ON THE
NORTH



RAMP TO GROUND
FLOOR

G1. RESTING POD

G2. BRIDGE

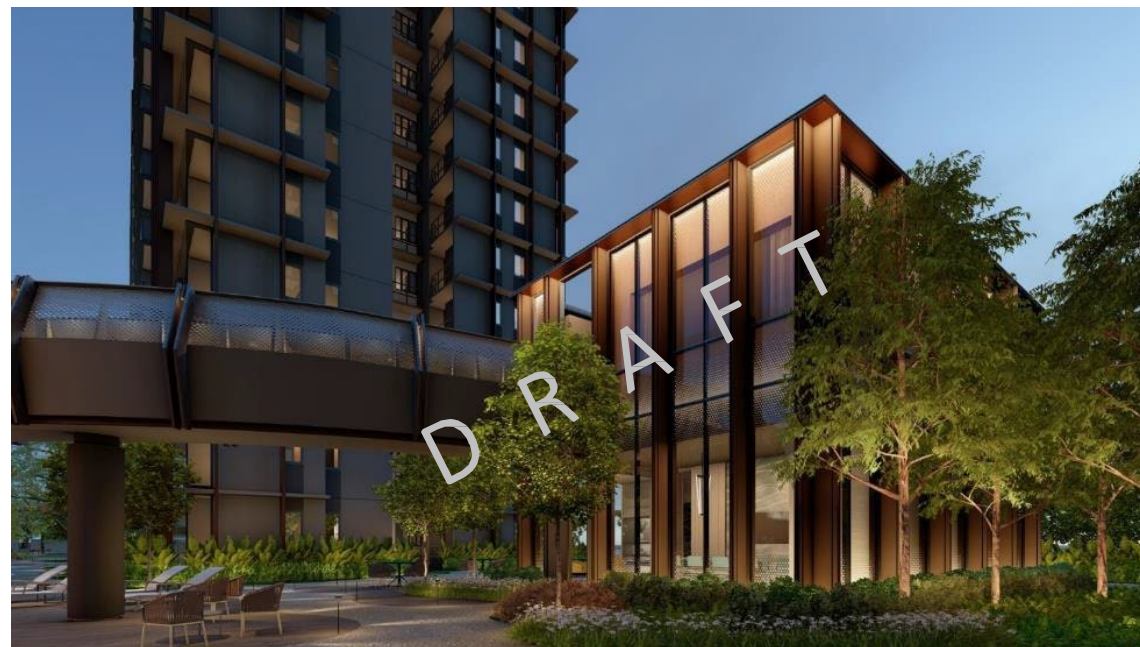
SOUTH SIDE SOCIAL

HERITAGE CLUBHOUSE



TIMELESS MEMORIES AWAITS AT THIAM SIEW HOUSE. THE CLUBHOUSE PRESERVE THE ORIGINAL MARSEILLE ROOF TILES, GATE POST AND ORIGINAL WOODEN CASEMENT WINDOWS AND DOORS.

MODERN CLUBHOUSE



ULTRA-CONTEMPORARY SOUTH SOCIAL WITH GLASS ROOM TO HOST THE DINNER PARTIES, SOUND ROOM FOR SINGALONGS, AND SOCIAL ROOM, A FLEXIBLE, SPACIOUS HALL THAT CAN BE EASILY CONFIGURED FOR RANGE OF ACTIVITIES

SIGNATURE COLLECTION

KITCHEN APPLIANCES



PRESTIGE COLLECTION

KITCHEN APPLIANCES



INFORMATION SUBJECT TO CHANGE WITHOUT PRIOR NOTICE . NOT FOR CIRCULATION . DATED MARCH 2023

INFORMATION SUBJECT TO CHANGE WITHOUT PRIOR NOTICE . NOT FOR CIRCULATION . DATED MARCH 2023

SIGNATURE | PRESTIGE

BATHROOM FIXTURES, FITTINGS AND WARES

- | | | | | |
|------------------------|----------------------------|----------------------------------|----------------------------|-----------------------|
| 1 BEDROOM + STUDY A | 2 BEDROOM B1 B2 | 3 BEDROOM C1 C2 C3 | 3 BEDROOM + STUDY C8 C9 | 4 BEDROOM D1 D2 D3 |
| | 2 BEDROOM + STUDY B3 B4 | 3 BEDROOM PREMIER C4 C5 C6 C7 | | |



LAUFEN



TECE



GESSI



** IN CHROME FINISH



LAUFEN



PRESTIGE COLLECTION

BATHROOM FIXTURES, FITTINGS AND WARES

- | | |
|-------------------------|----------------|
| 4 BEDROOM PREMIER D4 | 5 BEDROOM E |
|-------------------------|----------------|



TECE



GESSI



*GESSI BLACK BRUSHED FINISH

** IN BLACK BRUSHED FINISH



** IN BLACK BRUSHED FINISH, MATCHING TO GESSI



INFORMATION SUBJECT TO CHANGE WITHOUT PRIOR NOTICE . NOT FOR CIRCULATION . DATED MARCH 2023

INFORMATION SUBJECT TO CHANGE WITHOUT PRIOR NOTICE . NOT FOR CIRCULATION . DATED MARCH 2023



CLUB HOUSE AT THIAM SIEW HOUSE



LIBRARY



GLASS HOUSE

Function room with access to swimming pool and walking distance to playground and tennis court – perfect for family gathering and party

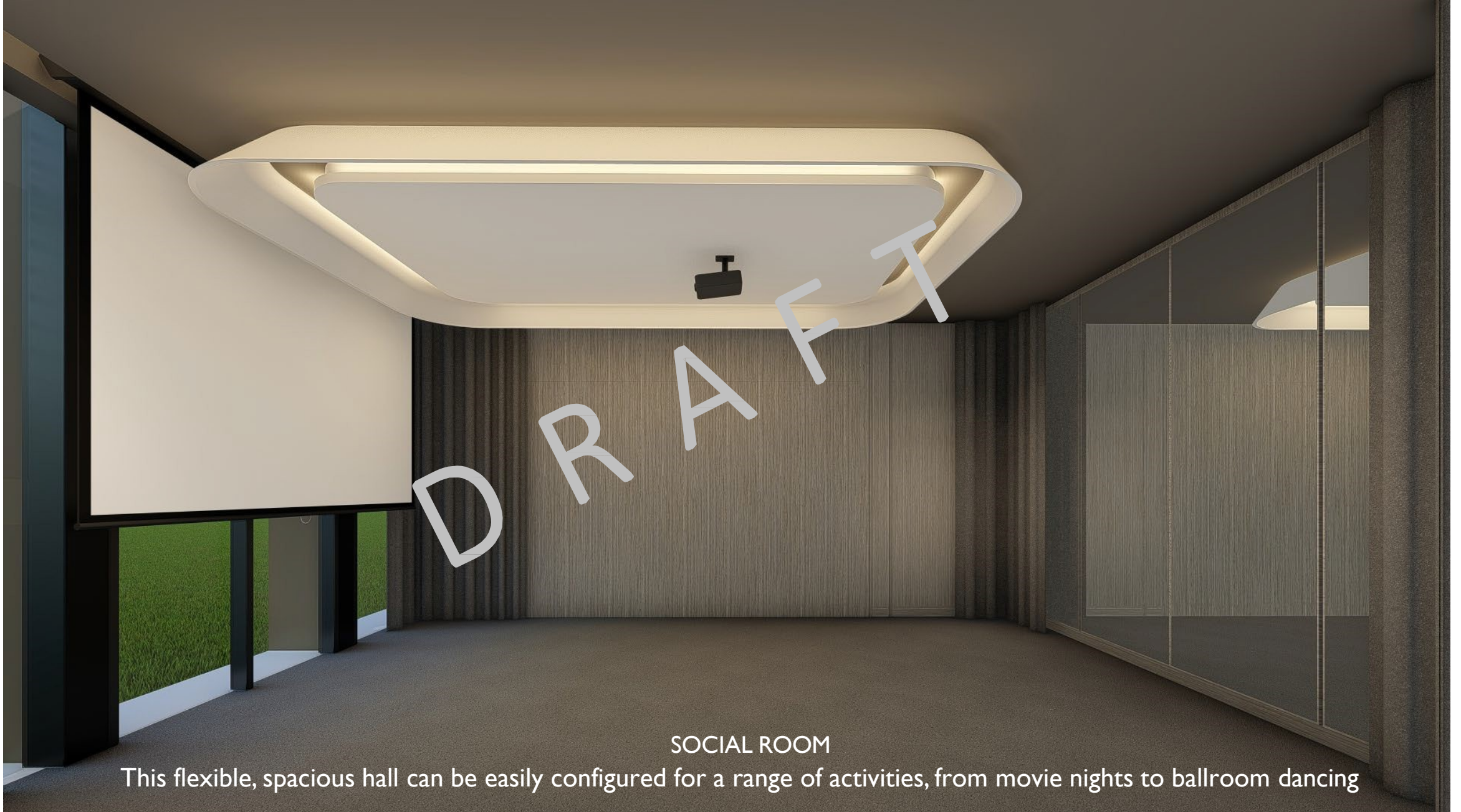
A modern sound room with wood-paneled walls and ceiling. The room features a large screen on the left wall, a modular green sofa, and a green perforated wall on the right. A chandelier with multiple white globe lights hangs from the ceiling. The word "DRAFFT" is overlaid in large, white, 3D letters across the center of the room.

DRAFFT

SOUND ROOM

K-pop group nights, family singalongs or anytime you feel like breaking into song

UPDATED MARCH 2023



SOCIAL ROOM

This flexible, spacious hall can be easily configured for a range of activities, from movie nights to ballroom dancing

D R A F T







INFORMATION SUBJECT TO CHANGE WITHOUT PRIOR NOTICE. NOT FOR CIRCULATION. DATED MARCH 2023